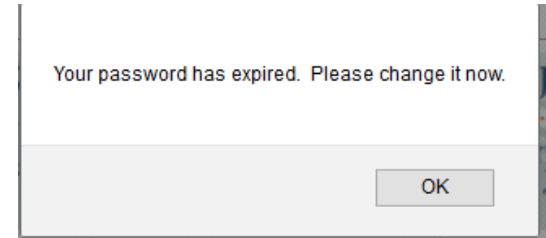


Website 2.0

How to Change Your Password

- Log into the new site, using your current username and password. You will be informed that your password has expired. Click OK
- A green screen will come up
- Your old password will already be in the top Password box
- Enter your new password
- Confirm your new password
 - The fields will turn blue if you have done this correctly.
- Click Submit



Change your password

Password:

New password:

Confirm new password:

I forgot my password!
[What to do?](#)

- VIP Information about your NEW password.
 - Your new password must be at **least 8 characters**
 - You must include at least one...
 - Capital letter
 - Small case letter
 - Number
- Now You Ready to log into the new website.
 - Enter your EMAIL ADDRESS
 - Enter your new password
 - Click Submit

MEMBER LOGIN

Email:

Password:

Forgot password?
[Click here.](#)

Welcome, Susan!